

# DR WILLIAM PURVES MEMORIALS



MEMORIALS

— Your guide —



# Why choose a memorial?

*People have been commemorating their loved ones with some form of memorial stone for thousands of years. From early Celtic cairns (a pile of rocks) to monoliths (a massive single rock), headstones have been a feature of our landscape and a key part of the funeral process. Today, memorials come in many forms and are often used to mark a grave or resting place where ashes have been interred, or simply mark a favourite spot.*



# *Marking the past for future generations.*

*A memorial is a lasting tribute to the enduring memory of a loved one.*

*It is a tangible way of commemorating their life, being both a reflection of their unique personality and an inspiration for future generations. That is why time and attention to the choice of the appropriate memorial is so important and why we offer expert advice and guidance at all stages of the process.*

---

# Burial Memorials

---

*Commissioning a memorial is something you can do at any time. For some people that is during the initial arrangement and for others it follows after the funeral where time is spent choosing styles and inscriptions and often involves a wider family discussion.*

*Our team of craftsman, and your funeral director, will guide you through the various options. We can do this either in our branch, your home or at the cemetery, and over as much time as it takes.*



## Memorial Craftsmen

---

We have our own highly qualified team of stonemasons based in the Scottish borders. Known for being meticulous, reliable and working to the highest standards, the team has many years experience of memorial craftsmanship where skills have been passed through many generations.

Their expertise is available to consult on styles and inscriptions, from the traditional to the contemporary. Sample materials and digital drawings of your preferred design are always offered to you in advance. No memorial work is undertaken until we have provided you with a full written estimate and you are happy. We can also provide insurance cover for all memorials.



# New Memorials

We supply new memorial stones in a wide choice of colours, sizes and finishes with varied ornamentation options. Each memorial is custom made - even if this means blending styles from different products. We're often asked to design bespoke memorials specifically to our client's requirements. Our creative team can work with you to create exactly what you want.

All prices include the memorial stone, erection in the cemetery on a concrete foundation to NAMM regulations, up to 80 letters of inscription (excluding vases), and VAT at 20%. It does not include the cemetery authority fee.

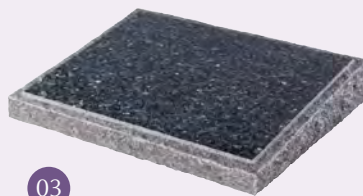
01	Colour	Finish	Size	Price
An all polished memorial with classic ogee top and available in a variety of colours.	SA Grey	All Polished	2'6" x 2'0"	£1,250
	Lavender Blue	All Polished	2'6" x 2'0"	£1,230
	Karin Grey	All Polished	2'6" x 2'0"	£1,325
	SA Grey	All Polished	2'10" x 2'6"	£1,530
	Lavender Blue	All Polished	2'10" x 2'6"	£1,450
	Karin Grey	All Polished	2'10" x 2'6"	£1,600



## Markers

Wedge markers can stand alone without the need for a foundation or can be placed in front of an existing memorial to provide space for added inscriptions. Available in all colours and different sizes and colours, a free standing marker is extremely flexible and a lower cost option.

02	Colour	Balmoral Red
	Finish	All Polished
	Size	1'4" x 1'8"
	Price	£895



03	Colour	Blue Pearl
	Finish	Polished/Rustic
	Size	4" / 2" 2'0" x 1'6"
	Price	£795



04	Colour	Black
	Finish	Polished/Rustic
	Size	2'3" x 1'6"
	Price	£990



05	Colour	SA Grey
	Finish	Polished/Sanded
	Size	4" / 2" 12" x 1'6"
	Price	£725

This wedge is available with or without the flower vase and in different colours or finishes.

Colour	Black
Finish	All Polished
Size	4" / 2" 1'6" x 1'6"
Price	£740



07	Colour	Ruby Red
	Finish	All Polished
	Size	2'6" x 1'6" x 6"
	Price	£650



# Churchyard Memorials

Stones with no artwork or designs will cost less



08

Colour Cathay Grey  
Finish Honed  
Size 2'6" x 2'0"  
Price £1000



09

Adding an eggshell finish to black granite gives a slate look and feel whilst still retaining the durability of granite.

Colour Black  
Finish Eggshell  
Size 2'6" x 2'0"  
Price £1,320



10

A less traditional shape where adding ornamentation can be very effective to personalise a memorial.

Colour SA Grey  
Finish Eggshell  
Size 2'6" x 2'0"  
Price £1,410



11

Colour SA Grey  
Finish Eggshell  
Size 2'6" x 2'0"  
Price £1,295



12

Ornamentation is usually customised and can be something with personal significance. Pictured here is a deep carved Celtic cord.

Colour SA Grey  
Finish Eggshell  
Size 2'9" x 2'0"  
Price £1,500



13

Colour Karin Grey  
Finish Polished/Rustic  
Size 3'0" x 2'1"  
Price £1,750

Adding a margin to frame the text or some personalised design is an effective way to personalise a stone.

# Rustic Memorials

Images include design features which are optional

14

Colour	Finish	Size	Price
SA Grey	Polished/Rustic	2'6" x 2'0"	£1,470
Light Grey Sub base	Sanded	2'4" x 1'3" x 3"	£80*
SA Grey	Polished/Rustic	2'10" x 2'6"	£1,730
Light Grey Sub base	Sanded	3'0" x 1'6" x 3"	£120*

\*Optional

15

Adding colour to carved ornamentation is an extra dimension that can make this memorial very personal.

Colour Indian Grey  
 Finish Polished/Rustic  
 Size 3'0" x 2'0"  
 Price £1,995

16

Colour SA Grey  
 Finish Polished/Rustic  
 Size 3'0" x 2'6"  
 Price £2,000

17

Colour Balmoral Red  
 Finish Polished/Rustic  
 Size 3'0" x 2'0"  
 Price £2,280

18

Colour Black/Karin Grey  
 Finish Polished/Rustic  
 Size 3'6" x 2'0"  
 Price £2,075

19

Colour Karin Grey  
 (Colour not as shown)  
 Finish Eggshell/Rustic  
 Size 2'6" x 1'10"  
 Price £1,550

19

Colour Glenaby  
 Finish Polished/Rustic  
 Size 2'6" x 2'6"  
 Price £2,650

A rustic margin or base highlight the natural textures and uniqueness of granite.

20

Colour Karin Grey  
 (Colour not as shown)  
 Finish Eggshell/Rustic  
 Size 2'6" x 1'10"  
 Price £1,550

# Polished Memorials

Images include design features which are optional

21



When choosing a polished black stone, laser etching allows the addition of detailed designs or photographs that will last for generations.

Colour	Black	
Finish	All Polished	
Size	2'6" x 2'0"	2'10" x 2'6"
Price	£1,000	£1,215

22



Colour	Emerald Pearl
Finish	All Polished
Size	2'6" x 2'0"
Price	£1,545

23



Colour	Black	Karin Grey
Finish	All Polished	All Polished
Size	2'9" x 2'0"	2'9" x 2'0"
Price	£1,645	£1,750

24

This very popular design is often ordered without the gilded margin or vase to provide a simpler effect.

Colour	Black	Black
Finish	All Polished	All Polished
Size	2'6" x 2'0"	3'0" x 2'6"
Price	£1,020	£1,275



25

Double vases add another possibility as does the addition of painted colour to the ornamentation design.

Colour	Black
Finish	All Polished
Size	3'0" x 2'6"
Price	£1,750



26

Colour	Lavender Blue	
Finish	All Polished	
Size	2'6" x 2'0"	2'10" x 2'6"
Price	£1,640	£1,840

27

Colour	Black
Finish	All Polished
Size	2'6" x 2'0"
Price	£1,015





# WILLIAM PURVES

## Memorials: Your guide

Stones with no artwork or designs will cost less

28



This stunning heart shaped memorial can have varied ornamentation to personalise. The double vase, as shown, is optional.

Colour Black  
 Finish All Polished  
 Size 2'6" x 2'0" 2'10" x 2'6"  
 Price £1,610 £1,885

29



Colour Emerald Pearl  
 Finish All Polished  
 Size 2'11" x 2'10"  
 Price £2,625

30



Less traditional shapes can transmit a strong message.

Colour Emerald Pearl  
 Finish All Polished  
 Size 3'0" x 2'6"  
 Price £2,050

31



The addition of a sub-base, changes the look of any memorial.

Colour Rosewood Red Light Grey Sub base  
 Finish All polished Sanded  
 Size 2'6" x 2'0" 2'4" x 1'3" x 3"  
 Price £1,250 £80\*

33

The family name added to the base adds a presence to any stone. This design has a sloping front base specifically to accommodate this feature.

Colour Moss Green  
 Finish All polished  
 Size 3'0" x 2'6"  
 Price £2,670

32

An asymmetric shape can work well to accommodate an added design or photo.

Colour Lavender Blue  
 Finish All Polished  
 Size 2'6" x 2'0" 2'10" x 2'6"  
 Price £1,265 £1,455



\*Optional

# Polished Memorials

Images include design features which are optional

34



An open book design is a good alternative when only two names will be added to a stone.

Shown here in Balmoral Red, but also very eye-catching in classic polished black, with the option of adding a photo plaque too.

Colour Balmoral Red Size 3'8" x 2'6"  
Finish All Polished Price £3,660



35 Colour Black  
Finish All Polished  
Size 2'0" x 2'3"  
Price £1,570

36 Colour Blue Pearl  
Finish All Polished  
Size 2'6" x 2'6"  
Price £1,788

## Part Polished Memorials

37



Sanding some surfaces and adding a margin creates a dramatic contrast. Choosing a different colour and changing the base transforms the look too.

Colour Bohus Pink  
Finish Polished/Sanded  
Size 3'6" x 2'6"  
Price £2,795

38



This smaller stone whilst having less space for inscriptions is ideal where space or budget are limiting.

Colour Black  
Finish Polished/Rustic  
Size 2'0" x 2'0"  
Price £900

39



Colour SA Grey  
Finish Polished/Sanded  
Size 2'9" x 2'0" 3'2" x 2'6"  
Price £1,670 £2,020

40



Colour SA Grey  
Finish Polished/Sanded  
Size 2'4" x 1'10"  
Price £900

# Large Memorials

Stones with no artwork or designs will cost less



41 The Celtic cross harks back to our roots and is an imposing memorial, often supplied in a grey shade of granite as well as pink.

Colour Bohus Pink  
Finish Polished/Rustic  
Size 4'2" x 2'3"  
Price £4,975



42 A statement stone with imposing presence. Also looks stunning in grey granite.

Colour Glenaby  
Finish Polished/Rustic  
Size 4'4" x 2'9"  
Price £4,500

## Monolith Memorials

A memorial doesn't need a base. These memorials are sunk directly into their foundation and the shape and choice of granite colour can be varied as shown here.



43  
Colour Various  
Finish Eggshell | Black  
Size 3'0" x 1'6"  
Price £2,350 - £2,800



44  
Colour Aurora Granite  
Finish Polished/Rustic  
Size 2'6" x 2'6"  
Price £1,820



# Vases

45 A granite vase in varied colours and finishes is a valuable extra to match a memorial stone. Adding a small inscription like initials or a name is recommended. Also available in 12" size.



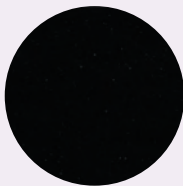
Colour	Finish	Size	Price
Karin Grey	All Polished	6" x 6" x 6"	£100*
Ruby Red	All Polished	6" x 6" x 6"	£100*
Black	All Polished	6" x 6" x 6"	£100*
SA Grey	All Polished	6" x 6" x 6"	£100*
Karin Grey	All Polished	8" x 8" x 8"	£120*
Ruby Red	All Polished	8" x 8" x 8"	£120*
Black	All Polished	8" x 8" x 8"	£120*
SA Grey	All Polished	8" x 8" x 8"	£120*



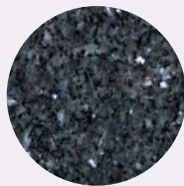
46

Colour	Black
Finish	All Polished
Size	12" x 12" x 6"
Price	£250

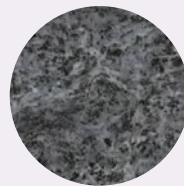
## Head Stone Swatches



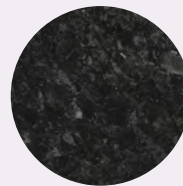
BLACK GRANITE



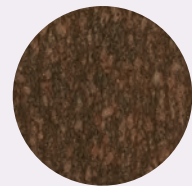
BLUE PEARL



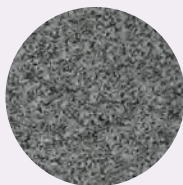
LAVENDER BLUE



EMERALD PEARL



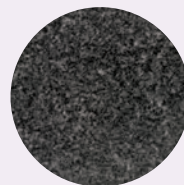
CATS EYE



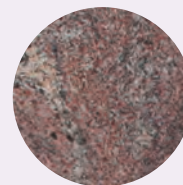
KARIN GREY



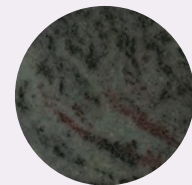
BUTTERFLY BLUE



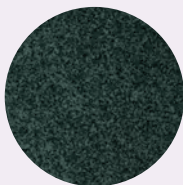
SOUTH AFRICAN DARK GREY



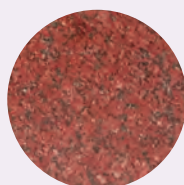
PARADISO



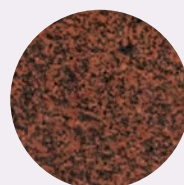
IMPERIAL GREEN



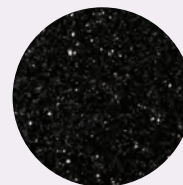
CHINESE EVERGREEN



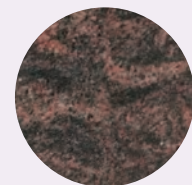
RUBY RED



BALMORAL RED



STAR GALAXY



AURORA

---



# Inscriptions

---

Inscriptions are very personal and there is no formula as such to follow. Cultural norms can play a part with some nationalities favouring photographs, ironmongery and other elements to dress the memorial. Others can be as simple as a name and a date.

Typically, a memorial will include the name of the deceased and relevant dates of birth and death, sometimes adding their age. It's also common to

include relationships. In some cases a location: their home or birth town or a place they lived is added too.

As well as a mark of time, a memorial is an opportunity to add an epitaph, a short sentence or two that sum up how you and your family want the deceased to be remembered. Our team can help you craft the wording to enable you to create the fitting and lasting tribute you require.



---

# Existing Memorials

---

Where there is an existing memorial, our team will prepare the additional inscriptions. We also offer a renovation service to ensure all memorials – old, damaged, leaning or weathered – can be repaired or restored for generations to come.

Even for older stones, we are able to create design sketches and sample digital designs in order to get it right for you.

*Our team of stonemasons has been involved in a number of high profile memorial repairs ahead of commemorations, anniversaries or other celebratory events.*





# Memorials of Yester Year

*Our expert craftsmen have the experience to renovate, re-erect and refurbish historical stones. We are frequently instructed to clean and renovate inscriptions as well as refurbishing memorials for a range of family memorials. Some of these are historically significant and some belong to well-known celebrities, many of which are at the centre of anniversary commemoration events.*

---

# Cremation Memorials

---

*We appreciate that you may want time to decide the exact resting place for a loved one's ashes, so we provide a range of alternatives to interment or scattering.*

---

## ASHES URNS AND KEEPSAKES

Urns and caskets are a traditional way of storing ashes and come in a variety of sizes and styles: eco-friendly wooden, bamboo, wool or wicker, personally designed with photography or a design to reflect your loved one's personality to sculptured object d'art. Many are available in different sizes so smaller mementos can be kept alongside or shared amongst family members.



## BURIAL OF ASHES

Interment or burial of the ashes in a cemetery, or a place of your choice, is also another option. This has the advantage of a specific and permanent place of memorial to visit or lay flowers over the coming years. Some cemeteries offer dedicated 'cremated remains plots'. Even a family grave, which is no longer available for a burial, would almost certainly be able to accommodate an ashes casket and our team of stonemasons can arrange for an inscription to be added to an existing memorial or a new memorial erected.

There are many options and your funeral director will guide you to ensure you have the right solution that works for you and your family. Some of our clients take years to make a final decision – we are here to help no matter how long it takes.

---

## *Lean on our experience*

William Purves has been looking after families in their time of need for generations. When you need us most, please call 0131 510 9095; there will always be someone here for you.

---

